

IN THE SUPREME COURT OF VICTORIA AT MELBOURNE
COMMERCIAL LIST
COMMERCIAL AND EQUITY DIVISION

2001 No. 2115

BETWEEN

**ANSETT AUSTRALIA GROUND STAFF SUPERANNUATION PLAN PTY LTD (ACN
065 590 178) (as trustee of the Ansett Australia Ground Staff Superannuation Plan)
& OTHERS (according to attached Schedule of Parties)**

Plaintiffs

and

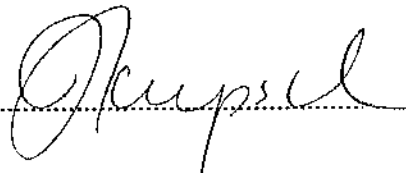
**ANSETT AUSTRALIA LIMITED (Administrator Appointed) (ACN 004 209 410) &
OTHERS (according to attached Schedule of Parties)**

Defendants

CERTIFICATE IDENTIFYING EXHIBIT "JHH 5"

This is the exhibit marked "JHH 5" produced and shown to JAMES HERBERT
HENNESSY at the time of swearing his affidavit this *JH* day of July 2002

Before me:



JANE ELIZABETH KUPSCH
Piper Alderman Lawyers
19, 50 Collins Street Melbourne
A current practitioner under
the Legal Practice Act 1996

**Exhibit "JHH 5"
AAES Update dated 4/07/01**

Liebich, David - Ansett

From: Reid, Michelle - Ansett
Sent: Thursday, 4 July 2002 16:39
To: !Eng Update List
Subject: AAES UPDATE Issue 42: New Organisational Structure

AAES Update *Issue 42*

Date: 4th July 2002

NEW ORGANISATION STRUCTURE

To support the new business model, the AAES organisational structure moving forward will incorporate a base load of 217 staff to sustain asset realisation and preservation, plus approximately 125 staff for project work associated with third party commercial and military contracts in Aircraft Maintenance, Components and Engine Overhaul. These numbers are draft only and subject to ongoing review.

The structure is comprised of 5 divisions:

- Quality Assurance
- Aircraft Maintenance, Components Overhaul & Materials
- Engine Overhaul
- Operator Services - Maintenance Schedule, Technical Redelivery
- Support Services - IT, HR, Commercial, Finance, Facility, Security

Corporate Services, Business Planning & Development, HR are to be consolidated under Support Services, and Asset Recovery and Maintenance Systems & Scheduling combine to form the new Operator Services department.

The indicative staff levels in each department and the required positions are show in the attached structures.

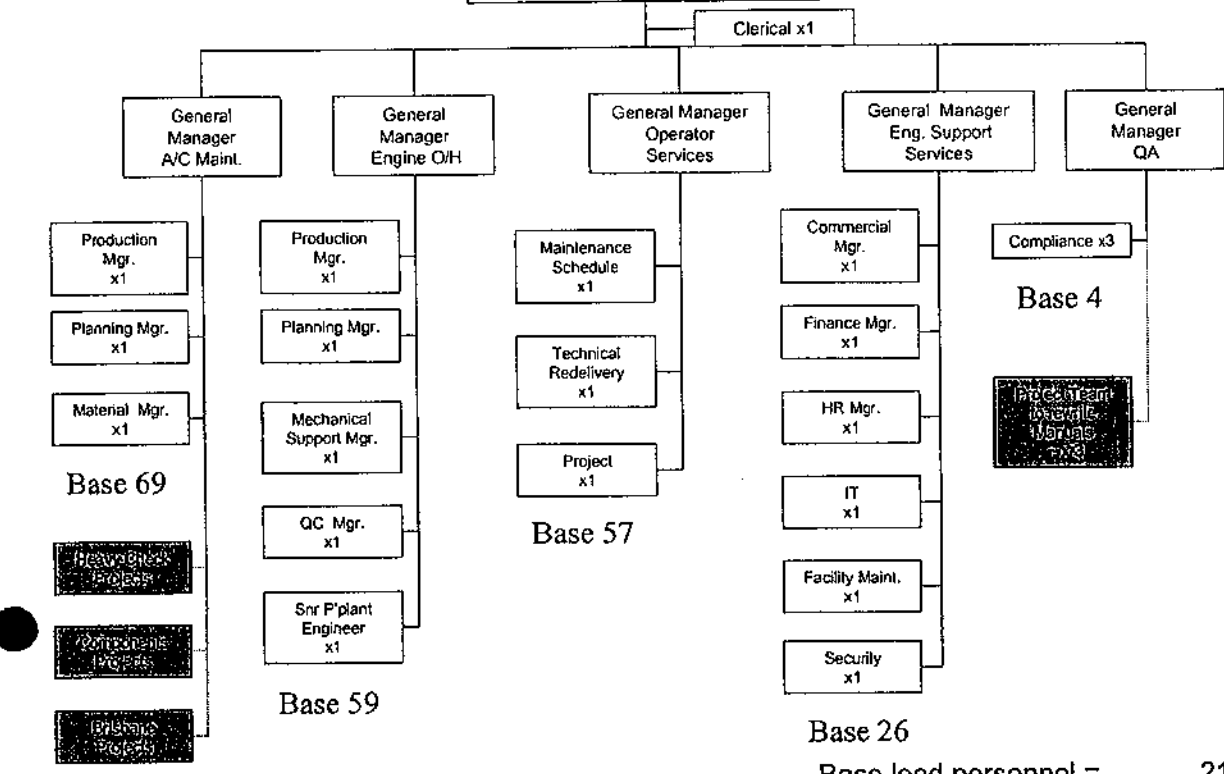
Please note that this structure is a draft only, and is subject to regulatory approval.



Org structures
4-7-02.ppt

Project personnel
 Base load personnel

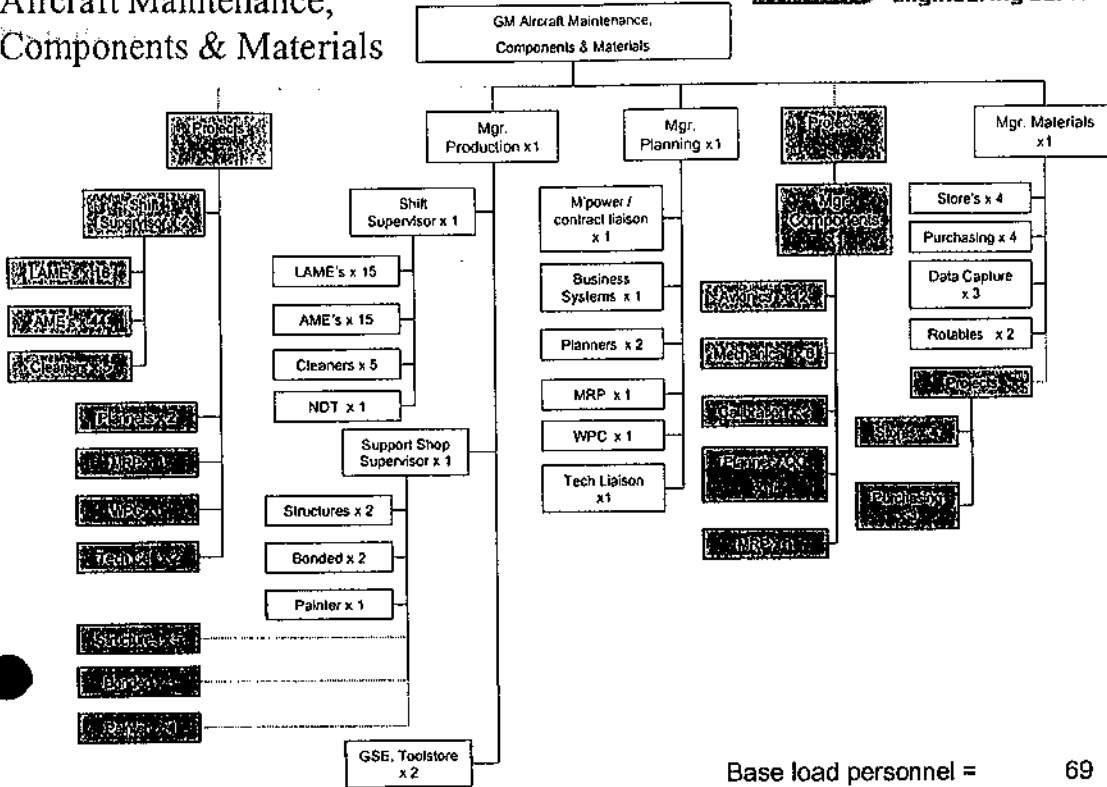
Chief Executive Officer
 Ansett Aviation Engineering Services



Base load personnel = 217
 Projects staff as required = 125

Draft Only, subject to Regulatory approval

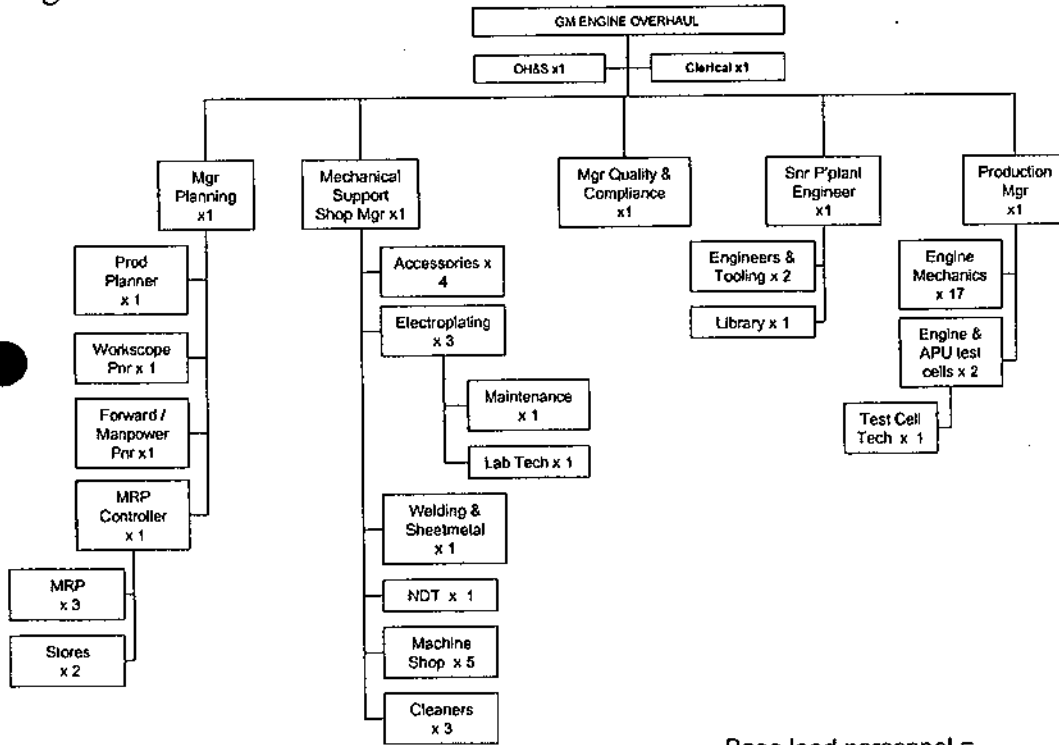
Aircraft Maintenance, Components & Materials



Base load personnel = 69
Projects staff as required = 115

Draft Only, subject to Regulatory approval

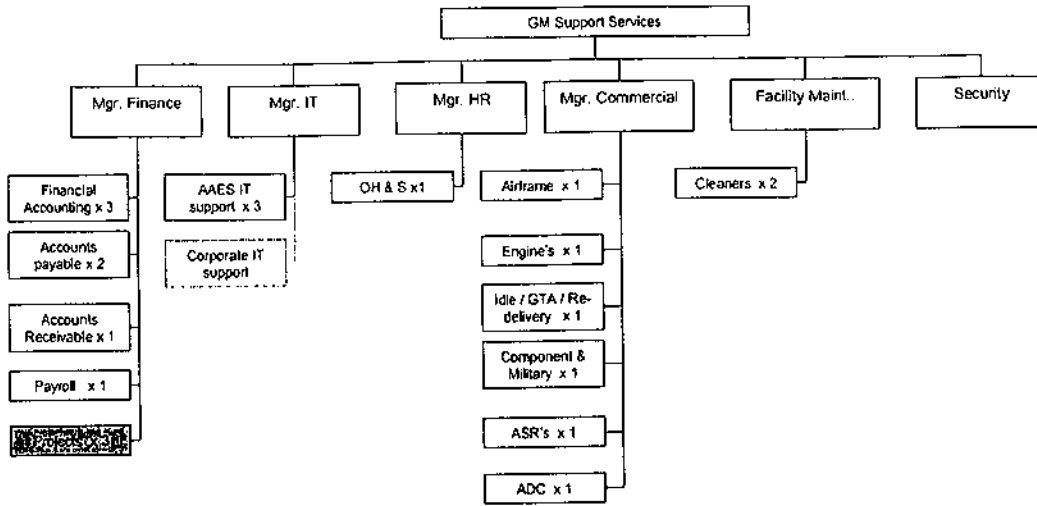
Engine Overhaul



Base load personnel = 59
Projects staff as required

Draft Only, subject to Regulatory approval

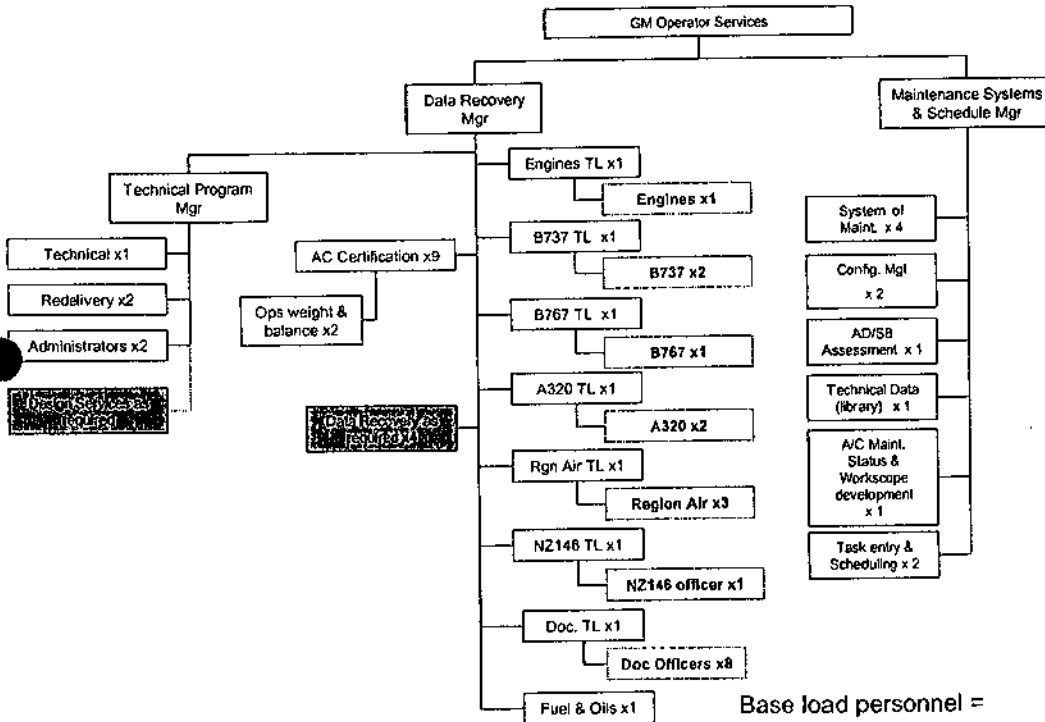
Support Services



Base load personnel = 26
 Projects staff as required = 3

Draft Only, subject to Regulatory approval

Operator Services



Base load personnel = 57
 Project staff as required = 4

Draft Only, subject to Regulatory approval



Org structures
 4-7-02.ppt